

UG G10-G16-G25

Description

The new generation of UG counters combine a high accuracy, stability and reliability of measurement, in addition to a high security against fraud due to the patented index.

The measurement groups have a high precision metrology, thanks to the original 3-wheel calibration system and the high quality of the materials used and a low pressure absorption. The UG meters can be used for the precise measurement of natural, manufactured, propane and other not corrosive gases.

Standard features

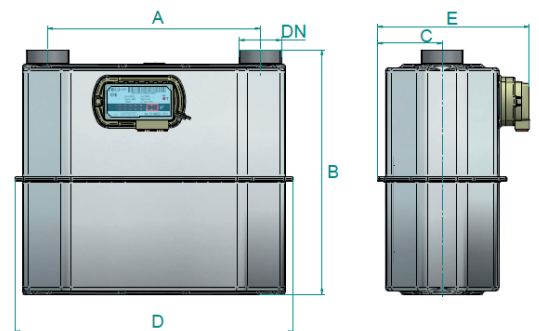
- Compact design
- High measuring accuracy for a long time
- Approved MID
- Slot for pulse generator retrofit BF
- Remote reading retrofit module
- 1 pressure connection
- 2 thermowells

Maximum protection against fraud and tamper

- Patented anti-tamper index
- Safety system backstop
- Magnetic transmission (no leaks)

Connections and flows

| Model | Vol. cyclic (dm ³) | Connections DN | Qmin (m ³ /h) | Qmax (m ³ /h) |
|--------|--------------------------------|----------------|--------------------------|--------------------------|
| UG G10 | 5,6 | 1 1/4" | 0,10 | 16 |
| | 5,6 | 2" | 0,10 | 16 |
| UG G16 | 5,6 | 2" | 0,16 | 25 |
| UG G25 | 11,2 | 2 1/2" | 0,25 | 40 |



Dimensions and weights

| Model | Dimensions | | | | | Weight (Kg) |
|--------|------------|-----|-----|-----|-----|-------------|
| | A | B | C | D | E | |
| UG G10 | 250 | 353 | 91 | 393 | 214 | 6,80 |
| | 280 | 345 | 91 | 393 | 214 | 6,80 |
| UG G16 | 280 | 345 | 91 | 393 | 214 | 6,80 |
| UG G25 | 335 | 361 | 141 | 456 | 313 | 11,3 |

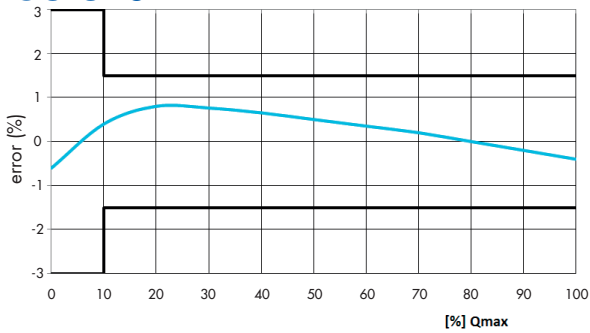
Technical data

| | |
|--|--|
| Qmin | 0,10 (G10) - 0,16 (G16) - 0,25 (G25) m ³ /h |
| Qmax | 16 (G10) - 25 (G16) - 40 (G25) m ³ /h |
| Cyclic volume | 5,6 (G10-G16) - 11,2 (G25) dm ³ |
| Max working pressure | 0,5 bar |
| for fireproof applications up to 650 ° C (EN 1359) | Pmax=0,1 bar |
| Pulse weight | 1 imp =0,1 m3 |
| Temperature range | -25°C ÷ +55°C |
| Index digits | 999999,99 m ³ |
| Approvals | CE-MID ; EN 1359 |

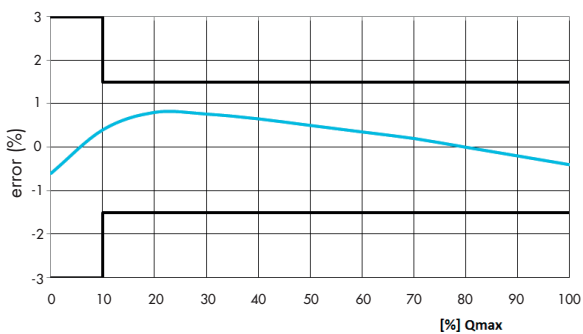
Typical error curve

The use of high quality materials and very high quality setting of each meter, make high stable the error curve during life time.

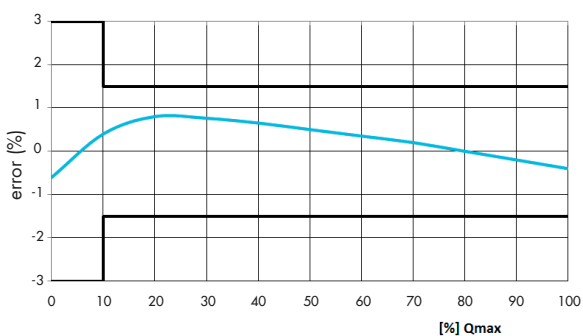
UG G10



UG G16

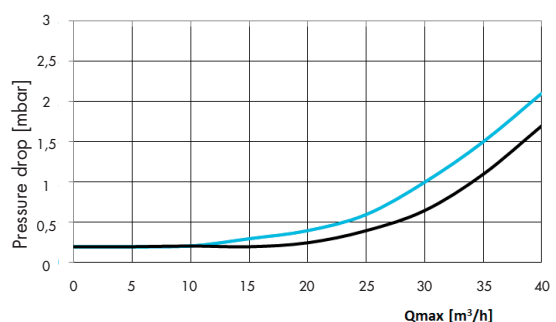
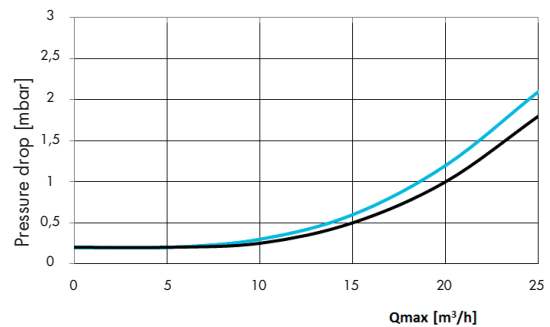
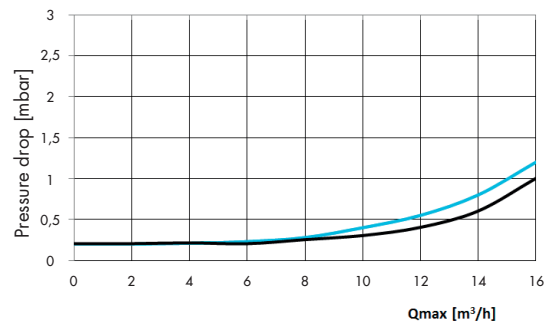


UG G25



Pressure loss curve

The precision machining of internal moving parts surface, minimize pressure losses and noise level.



Product range



Rotary piston gas meters



Turbine gas meters



Gas pressure regulators



Electronic volume correctors



Diaphragm gas meters



Smart meters

metrixitalia

Metrix Italia s.r.l.

Via Nona Strada, 53 - 35129 Padova (Italy)

Tel: +39 049 5349377 - Fax: +39 049 8076008

www.metrixitalia.it - E-mail: info@metrixitalia.it